



Gatliff Road, Chelsea, SW1W

£2,500,000

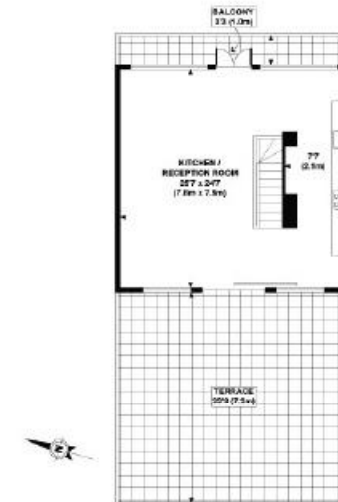
www.luxecorp.co.th



Gatliff Road, Chelsea

£2,500,000

A bright and spacious duplex Penthouse apartment arranged over the top two floors (7th & 8th) of this prestigious modern riverside development. To the top floor the property comprises of a large dual aspect open plan reception with floor to ceiling windows providing access to a large private terrace and a modern integrated kitchen with access to a balcony. To the 7th floor is a master bedroom with built in wardrobes, en-suite bathroom with separate shower, a second bedroom with en-suite bathroom plus a further bedroom, separate shower room and excellent storage. Additional benefits include access for residents to a fantastic gymnasium and spa facilities, a 24 hour porter, secure underground parking, comfort cooling and wood flooring. Grosvenor Waterside is a luxury riverside development close to Sloane Square and the world famous shopping district of Chelsea's Kings Road. The rail links of Victoria are also within a few minutes' walk. Lease: 992 Years Remaining / Service Charge: £8900pa / Ground Rent: £1250pa



EIGHTH FLOOR
GROSS INTERNAL
FLOOR AREA 629 SQ FT



SEVENTH FLOOR
GROSS INTERNAL
FLOOR AREA 989 SQ FT

APPROX. GROSS INTERNAL FLOOR AREA 1618 SQ FT / 149 SQ M
N.G.M. - 1001 Copyright 2015 P.A.A. 05-08
Floor plans are for identification and guidance purposes only, not to scale.
Compliant with BS5 code of measuring practice.

For Further Information Please Contact us : Tel (+668) 1456 3422 www.luxecorp.co.th