



Grosvenor Waterside, Chelsea, SW1W

£750,000

[www.luxecorp.co.th](http://www.luxecorp.co.th)

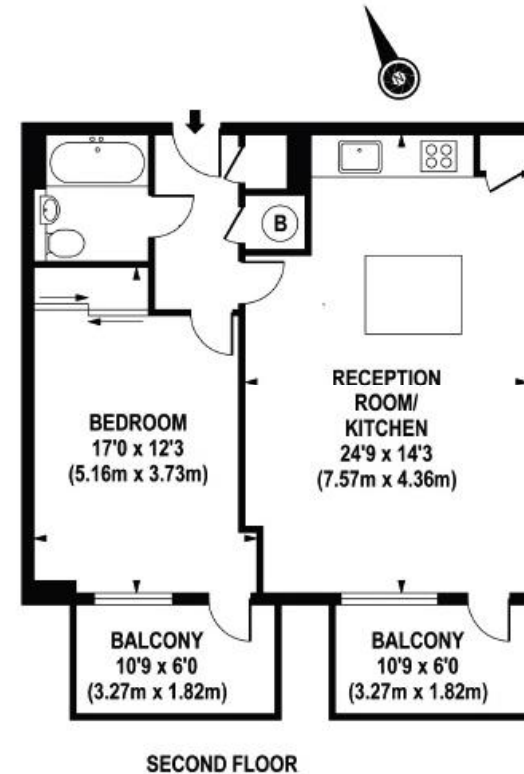


## Grosvenor Waterside, Chelsea

£750,000

A beautifully presented 1 double bedroom, 1 bathroom apartment on the 2nd floor of this popular development. This extremely well proportioned property has the popular dock aspect and enjoys stunning views of Chelsea Bridge and the River Thames. Additional benefits include an open plan reception room, modern integrated kitchen, built in wardrobes to the bedroom, utility cupboard, access to two spacious balconies, comfort cooling, 24 hour porter and wood flooring. Sloane Square is within walking distance as are the rail links of Victoria with its fast connections to the City and Gatwick Airport.

Lease: 999 Years From New / Service Charge: TBC / Ground rent: TBC



APPROX. GROSS INTERNAL AREA 667 sq.ft / 61.96 sq.m