

Great Suffolk Street, Borough, SE1



£445,000
www.luxecorp.co.th

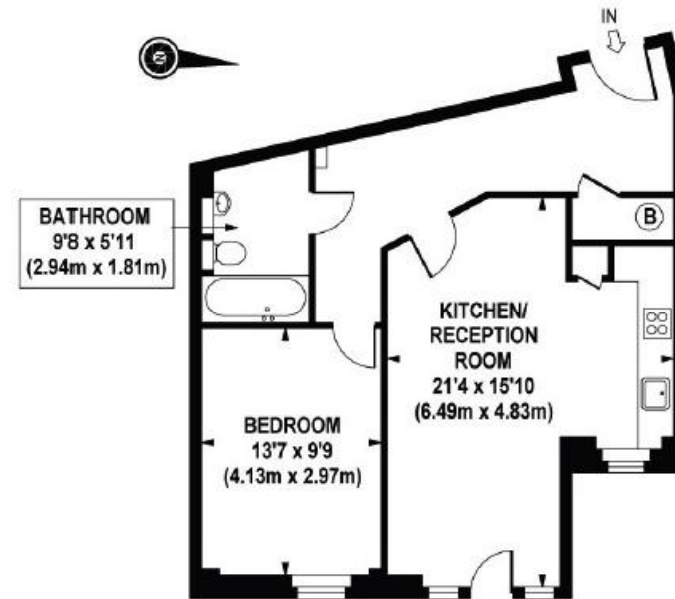


18 Great Suffolk Street, Borough

£445,000

A bright and spacious 1 bedroom apartment located on the 3rd floor of this modern development in the heart of Borough. The property has wooden flooring, an open plan reception room with modern integrated kitchen, bathroom and good storage including fitted wardrobes to the bedroom. Great Suffolk Street is superbly positioned with Borough Market a short walk to the East, the South Bank minutes to the North and Waterloo station to the West. Located centrally between Waterloo and London Bridge stations in Zone 1, the development is also only a five minute walk from Southwark Tube Station on the Jubilee Line; Canary Wharf can be reached in 10 minutes and Bond Street, at the heart of the West End, is a few minutes away.

Lease: 999 Years From New / Service Charges: £979.16pa / Ground Rent: £300pa



SECOND FLOOR

APPROX. GROSS INTERNAL AREA 610 sq.ft / 56.72 sq.m